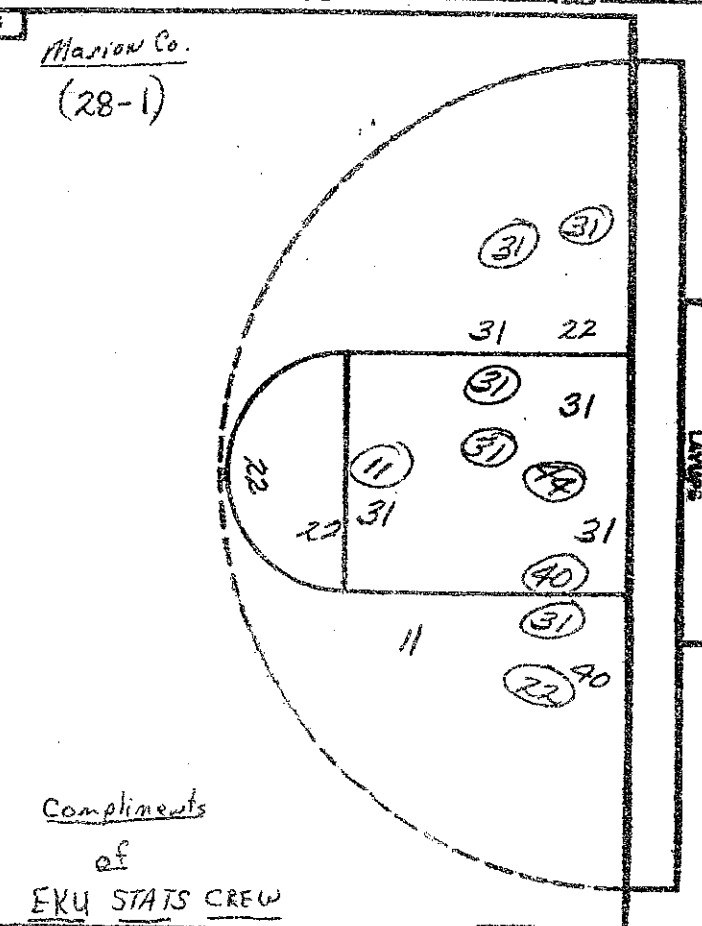


TURNOVERS

10:31
55:22
14:22
24:22
44:31
10:41
10:22
10:11
14:14
10:14
11:11
14:41
12:22
14:22
15
16
17
18



Compliments
of
EKU STATS CREW

NO.	Marion County	FG-FGA	FT-FTA	REB	P	TP	A
44	Lisa Mattingly	3-5	1-2	8	3	7	2
14	Janet Todd	2-3	0-1	6	5	4	0
40	Angela Robinson	1-2	0-1	8	2	2	1
31	Pam Smith	8-15	2-2	3	3	18	1
22	Debbie Sandusky	3-8	0-1	0	5	6	2
20	Karen Nalley	0-0	1-2	6	0	1	0
11	Glenda Edelen	2-4	3-3	2	1	7	2
12	Peggy Hamilton	-	DNP				
32	Louann Gardner	0-0	0-0	0	1	0	0
10	Lisa Rogers	-	DNP				
24	Jana Thompson	-	DNP				
41	Lorri Peterson	-	DNP				
		-	-				
		-	-				
TOTALS		19-37	7-12	33	20	45	9

PERCENTS 51.4 58.3 0 TEAM REBOUNDS (NOT IN TOTAL)

NO.	Mercy Academy	FG-FGA	FT-FTA	REB	P	Y.	A
24	Kay Hancock	8-11	1-1	6	1	17	2
42	Maria Poschinger	1-4	0-0	1	1	2	0
55	Sandy Kinkton	3-19	2-5	8	2	8	2
14	Rosemary Finch	2-8	2-2	5	4	6	1
10	Mary Ann Blair	2-7	4-5	3	2	8	2
44	Lisa Williams	1-4	7-9	7	3	9	1
22	Gloria Montano	0-1	0-0	3	3	1	2
20	Tammy Wigginton	-	DNP				
52	Jill Sander	-	DNP				
21	Joni Heil	-	DNP				
12	Terri Stickler	-	DNP				
33	Gina Feldkamp	-	DNP				
		-	-				
		-	-	10.8			
TOTALS		17-54	16-22	38	16	50	10

PERCENTS 31.5 72.7 1 TEAM REBOUNDS (NOT IN TOTAL)

SCORE BY HALVES
 OFFICIALS: Brenda Hughes and Doug Allen
 ATTENDANCE: 3,700 est. 3rd Session
 Marion Co 12-12-8-13=45
 Mercy 11-4-13-22=50